

nino

supplier. **alya** origin. **turkey** type. **fabric**

class **A**



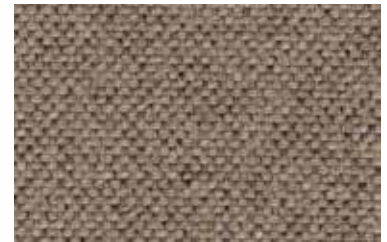
07-135



09-24



17-135



18-17



18-72



22-27



24-24



27-147



35-135



38-38



52-27



69-38



69-87



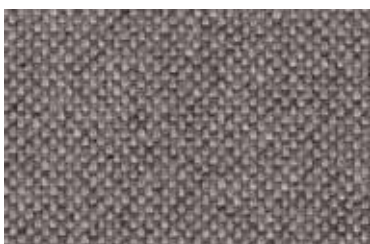
72-24



87-87



130-32



133-38



135-135



143-12



143-87

nino

supplier. **alya** origin. **turkey** type. **fabric**

class A



147-12



22-147

class A

nino

PRODUCT SPECIFICATIONS / ÜRÜN ÖZELLİKLERİ			
Technical Informations Test Tipi	Unit Birim	Value Limit	Test Method Norm
Weight Ağırlık	gr. / m ²	469 (±10g%)	
Thickness Kalınlık	mm		
Width En	cm	140 +/- 2	
Roll Meter Top Metrajı	mt	50	
Resistance to Abrasion Yıpranma Direnci	tour	70.000	ISO 12947-2:1998
Light Fastness Işık Haslıđı		4-5	ISO 105-X12:2001
Pilling Boncuklanma		4-5	ISO 12945-2:2000
Composition İçerik	100% polyester		

Product Characteristics

Pigment bleed and colour abrasion may occur with dark and intensive colours. Pilling cannot be avoided and may also occur through the adhesion of fibres from other sources. All flat-woven fabrics may roughen in use and patina and glossy spots may occur. Pulled threads are to be expected if sharp objects catch in the fabric. Depending on the material, a slight striped effect may occur. Light colours will show soiling and jeans abrasion more quickly and clearly than darker colours. A minor loss of colour through exposure to UV rays is unavoidable, particularly with intensive colours. Minor variations in colour and texture between product lots are unavoidable and may occur.

Instructions for use

A certain degree of fading of the colours, due to exposure to light or abrasion through use over time, is also part of the nature of flat-woven fabrics. We do not take over a warranty on damage, which resulted from inappropriate use, chemical cleaning or additional impregnation.

Care instructions

You can help to maintain the original beauty of your covering fabric furniture by treating it carefully and caring for it properly. Please therefore heed the following recommendations:

- > Avoid exposing your brand new upholstered furniture to direct sunlight
- > Do not position your new upholstered furniture directly in front of heat sources.
- > Avoid contact between your upholstered furniture and rough clothing.
- > Remove inevitable dust and minor soiling through gentle vacuuming and using a soft upholstery nozzle.

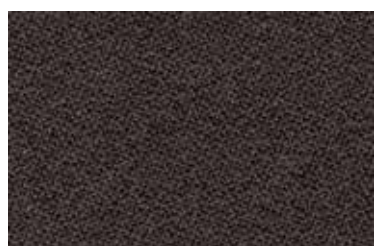
Cleaning

Do not use any abrasive detergents that could damage your new covering fabric. Any stains should be dabbed immediately with a cotton cloth and cleaned in a circular motion working from the outside in. Test any cleaning products on a hidden area first to ascertain their compatibility.

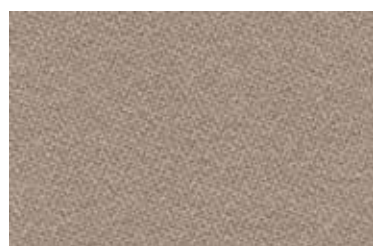
oslo

supplier. **alya** origin. **turkey** type. **fabric**
easy cleaning / water repellent

class A



85652



94976



95742



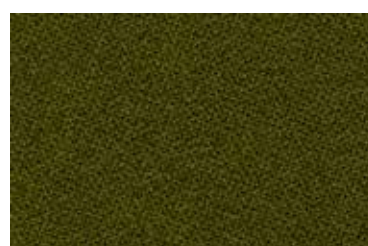
95744



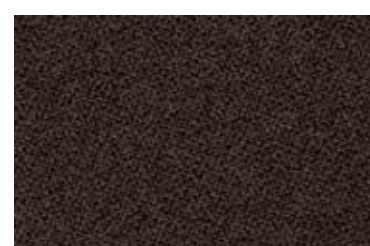
114613



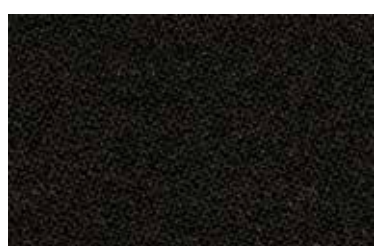
114615



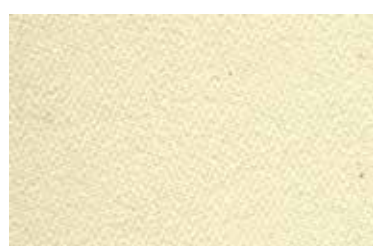
114616



114617



114618



114619



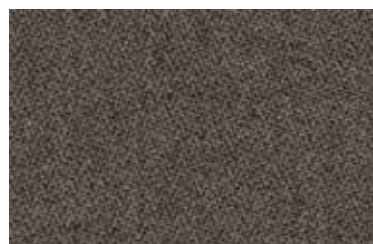
114620



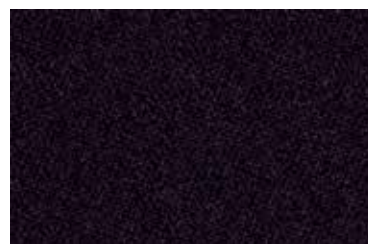
114621



114622



131547



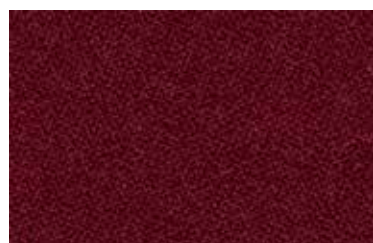
131533



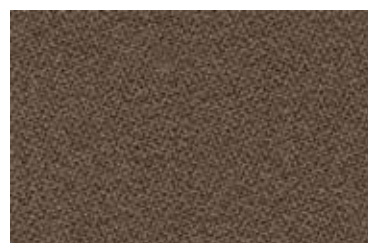
131575



131577



131579



131580



131582

oslo

supplier. **alya** origin. **turkey** type. **fabric**
easy cleaning / water repellent

class A



94982



114614

class A

oslo

PRODUCT SPECIFICATIONS / ÜRÜN ÖZELLİKLERİ			
Technical Informations Test Tipi	Unit Birim	Value Limit	Test Method Norm
Weight Ağırlık	gr. / m ²	570	
Width En	cm	142 (±2%)	
Roll Meter Top Metraji	m		
Resistance to Abrasion Yıpranma Direnci	tour	25.000	ISO 12947-2
Pilling Boncuklanma		4	ISO 12945-2
Color Fastness Renk Haslıđı	dry / kuru wet / nemli	4 4	ISO 105-X12
Light Fastness Işıđık Haslıđı		4	XENOTEST ISO 105-B02
Composition İçerik	100% polyester		

Product Characteristics

Pigment bleed and colour abrasion may occur with dark and intensive colours. Pilling cannot be avoided and may also occur through the adhesion of fibres from other sources. All flat-woven fabrics may roughen in use and patina and glossy spots may occur. Pulled threads are to be expected if sharp objects catch in the fabric. Depending on the material, a slight striped effect may occur. Light colours will show soiling and jeans abrasion more quickly and clearly than darker colours. A minor loss of colour through exposure to UV rays is unavoidable, particularly with intensive colours. Minor variations in colour and texture between product lots are unavoidable and may occur.

Instructions for use

A certain degree of fading of the colours, due to exposure to light or abrasion through use over time, is also part of the nature of flat-woven fabrics. We do not take over a warranty on damage, which resulted from inappropriate use, chemical cleaning or additional impregnation.

Care instructions

You can help to maintain the original beauty of your covering fabric furniture by treating it carefully and caring for it properly. Please therefore heed the following recommendations:

- > Avoid exposing your brand new upholstered furniture to direct sunlight
- > Do not position your new upholstered furniture directly in front of heat sources.
- > Avoid contact between your upholstered furniture and rough clothing.
- > Remove inevitable dust and minor soiling through gentle vacuuming and using a soft upholstery nozzle.

Cleaning

Do not use any abrasive detergents that could damage your new covering fabric. Any stains should be dabbed immediately with a cotton cloth and cleaned in a circular motion working from the outside in. Test any cleaning products on a hidden area first to ascertain their compatibility.

elegance

supplier. **alya** origin. **turkey** type. **fabric**
easy cleaning / water repellent / nano-technology

class A



104



130



151



157



174



186



205



256



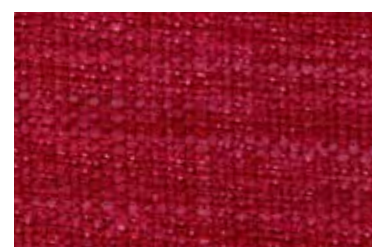
263



277



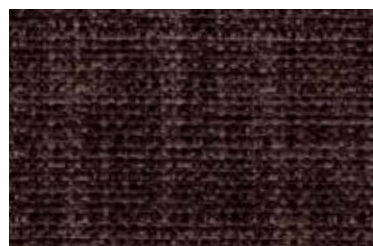
332



343



355



384



405



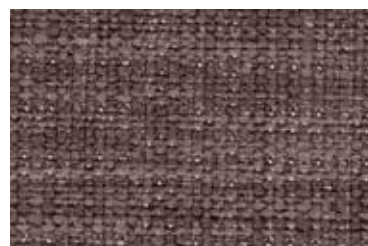
425



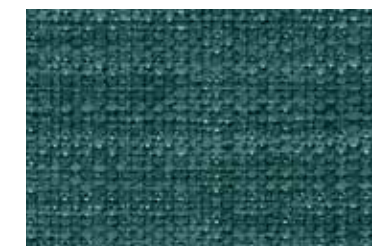
434



453



486



496

elegance

supplier. **alya** origin. **turkey** type. **fabric**
easy cleaning / water repellent / nano-technology

class A



498



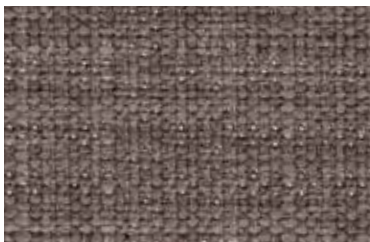
506



525



567



603



344

class A

elegance

PRODUCT SPECIFICATIONS / ÜRÜN ÖZELLİKLERİ			
Technical Informations Test Tipi	Unit Birim	Value Limit	Test Method Norm
Weight Ağırlık	gr. / m ²	296	
Width En	cm	140	
Roll Meter Top Metrajı	m	50	ISO 12947-2 / ISO 1294
Resistance to Abrasion Yıpranma Direnci	martindale	35.000	BS EN ISO 12947-2
Tear Strength Yırtılma Direnci	weft / atkı warp / çözgü	363 305	ISO 13937-2
Resistance to Seam Slippage Dikiş Kayma Direnci	weft / atkı warp / çözgü	4-5 5-6	ISO 13936-2
Pilling Boncuklanma	2000 dvr	3	ISO 12945-2
Light Fastness Işık Haslıđı	bright colours / açık renkler dark colours / koyu renkler	5 5	ISO 105-X12
Composition İçerik	100% polyester		

Product Characteristics

Pigment bleed and colour abrasion may occur with dark and intensive colours. Pilling cannot be avoided and may also occur through the adhesion of fibres from other sources. All flat-woven fabrics may roughen in use and patina and glossy spots may occur. Pulled threads are to be expected if sharp objects catch in the fabric. Depending on the material, a slight striped effect may occur. Light colours will show soiling and jeans abrasion more quickly and clearly than darker colours. A minor loss of colour through exposure to UV rays is unavoidable, particularly with intensive colours. Minor variations in colour and texture between product lots are unavoidable and may occur.

Instructions for use

A certain degree of fading of the colours, due to exposure to light or abrasion through use over time, is also part of the nature of flat-woven fabrics. We do not take over a warranty on damage, which resulted from inappropriate use, chemical cleaning or additional impregnation.

Care instructions

You can help to maintain the original beauty of your covering fabric furniture by treating it carefully and caring for it properly. Please therefore heed the following recommendations:

- > Avoid exposing your brand new upholstered furniture to direct sunlight
- > Do not position your new upholstered furniture directly in front of heat sources.
- > Avoid contact between your upholstered furniture and rough clothing.
- > Remove inevitable dust and minor soiling through gentle vacuuming and using a soft upholstery nozzle.

Cleaning

Do not use any abrasive detergents that could damage your new covering fabric. Any stains should be dabbed immediately with a cotton cloth and cleaned in a circular motion working from the outside in. Test any cleaning products on a hidden area first to ascertain their compatibility.

mustang

supplier. alya origin. turkey type. fabric

class A



27-10



10-10



10-63



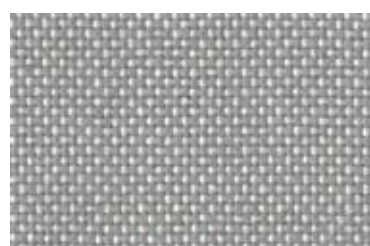
12-33



12-M66



27-33



27-61



33-33



33-61



33-M89



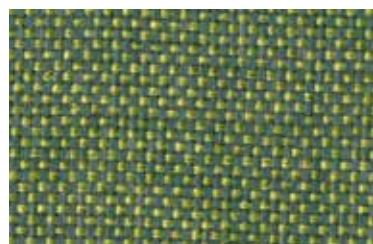
41-M66



60-61



65-65



65-M89



66-37



66-41



66-63



68-41



68-60

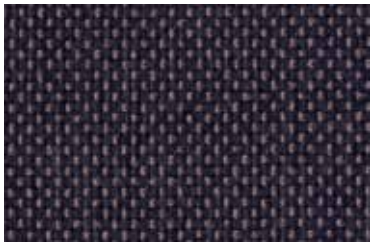


68-68

mustang

supplier. **alya** origin. **turkey** type. **fabric**

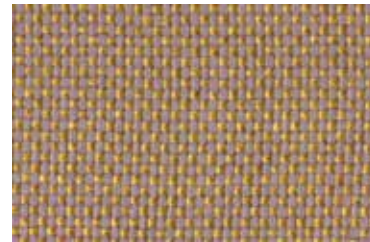
class A



68-M75



M80-33



M80-37



M80-M75

class A

mustang

PRODUCT SPECIFICATIONS / ÜRÜN ÖZELLİKLERİ			
Technical Informations Test Tipi	Unit Birim	Value Limit	Test Method Norm
Weight Ağırlık	gr. / m ²	280 +/-%5	ISO 3801:1977
Width En	cm	140	ISO 22198:2006
Resistance to Abrasion Yıpranma Direnci	tour	> 80.000	ISO 12947-2:2017
Tensile Strength Gerilme Direnci	n	weft 1300 warp 1600	EN ISO 13934-1:2013
Tear Strength Yırtılma Direnci	n	weft 115 warp 122	EN ISO 13937-3:2000
Resistance to Seam Slippage Dikiş Kayma Direnci	mm	weft 4 mm warp 3,9 mm	ISO 13936-2:2006
Pilling Boncuklanma		5	ISO 12945-2:2000
Color Fastness - Wet Renk Haslıđı - Kuru		5	ISO-105-X12:2016
Colour Fastness - Dry Renk Haslıđı - Islak		5	ISO-105-X12:2016
Colour Fastness to Artificial Light Işık Haslıđı		blue wool 6 gray scale 4	ISO 105 B02:2014
Composition İçerik	100% polyester		ISO 1833:2006

Product Characteristics

Pigment bleed and colour abrasion may occur with dark and intensive colours. Pilling cannot be avoided and may also occur through the adhesion of fibres from other sources. All flat-woven fabrics may roughen in use and patina and glossy spots may occur. Pulled threads are to be expected if sharp objects catch in the fabric. Depending on the material, a slight striped effect may occur. Light colours will show soiling and jeans abrasion more quickly and clearly than darker colours. A minor loss of colour through exposure to UV rays is unavoidable, particularly with intensive colours. Minor variations in colour and texture between product lots are unavoidable and may occur.

Instructions for use

A certain degree of fading of the colours, due to exposure to light or abrasion through use over time, is also part of the nature of flat-woven fabrics. We do not take over a warranty on damage, which resulted from inappropriate use, chemical cleaning or additional impregnation.

Care instructions

You can help to maintain the original beauty of your covering fabric furniture by treating it carefully and caring for it properly. Please therefore heed the following recommendations:

- > Avoid exposing your brand new upholstered furniture to direct sunlight
- > Do not position your new upholstered furniture directly in front of heat sources.
- > Avoid contact between your upholstered furniture and rough clothing.
- > Remove inevitable dust and minor soiling through gentle vacuuming and using a soft upholstery nozzle.

Cleaning

Do not use any abrasive detergents that could damage your new covering fabric. Any stains should be dabbed immediately with a cotton cloth and cleaned in a circular motion working from the outside in. Test any cleaning products on a hidden area first to ascertain their compatibility.

new king

supplier. **alya** origin. **turkey** type. **artificial leather**
fire reterdant

class A



6



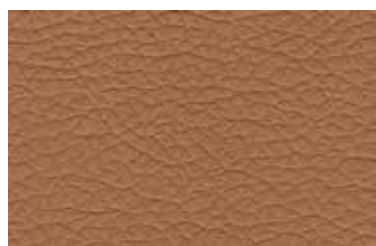
13591



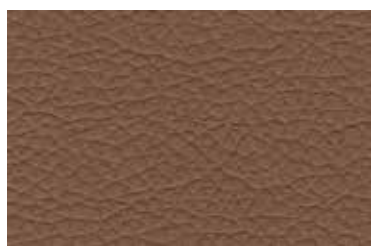
13592



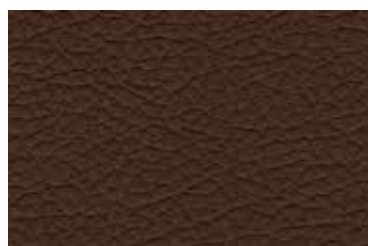
13719



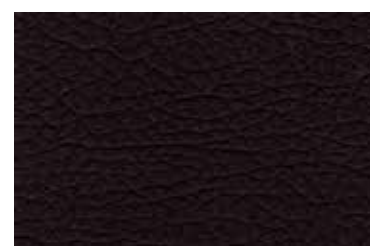
13721



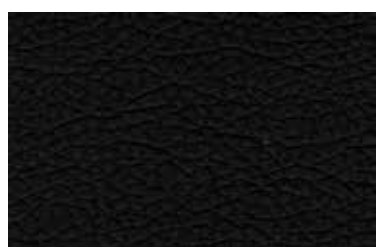
13723a



13724b



13725a



13727



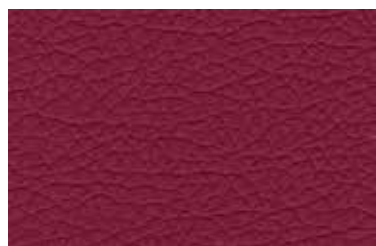
13742



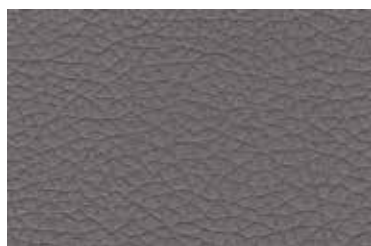
13743



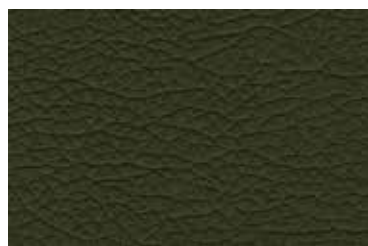
13822



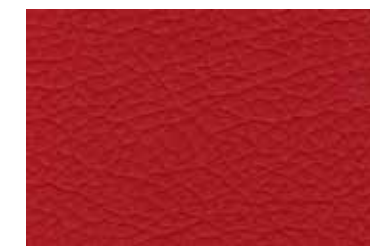
13823



17560



17563



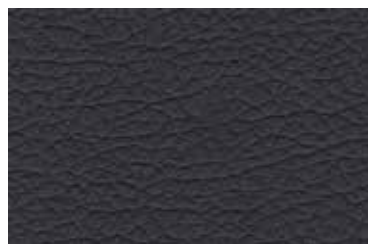
17565



17566



17567



17568



24327

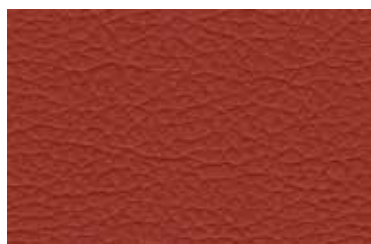
new king

supplier. **alya** origin. **turkey** type. **artificial leather**
fire reterdant

class A



24328



24329

class A

new king

PRODUCT SPECIFICATIONS / ÜRÜN ÖZELLİKLERİ			
Technical Informations Test Tipi	Unit Birim	Value Limit	Test Method Norm
Weight Ağırlık	gr. / m ²	600 +/- %5	
Width En	cm	138-140	
Roll Meter Top Metraji	m	30	
Resistance to Abrasion Yıpranma Direnci	martindale	230.000	BS EN ISO 12947-2:1999&4:1999
Bursting Strength Patlama Dayanımı		> 600 kPa	BS EN ISO 5470-1:1999
Elongation Strength Uzama Direnci	weft / atkı warp / çözgü	2853 g. 5803 g.	EN ISO 13937-3
Resistance to Seam Slippage Dikiş Kayma Direnci	weft / atkı warp / çözgü	250 N 250 N	EN ISO 13936-2
Flammability Yanabilirlik		pass	BS 5852-1:1979
Light Fastness Işık Haslığı	bright colours / açık renkler dark colours / koyu renkler	5 5	DIN EN ISO 105-B02:2002
Composition İçerik	76% pvc, 22% polyester, 2% pu		

Product Characteristics

Pigment bleed and colour abrasion may occur with dark and intensive colours. Pilling cannot be avoided and may also occur through the adhesion of fibres from other sources. All flat-woven fabrics may roughen in use and patina and glossy spots may occur. Pulled threads are to be expected if sharp objects catch in the fabric. Depending on the material, a slight striped effect may occur. Light colours will show soiling and jeans abrasion more quickly and clearly than darker colours. A minor loss of colour through exposure to UV rays is unavoidable, particularly with intensive colours. Minor variations in colour and texture between product lots are unavoidable and may occur.

Instructions for use

A certain degree of fading of the colours, due to exposure to light or abrasion through use over time, is also part of the nature of flat-woven fabrics. We do not take over a warranty on damage, which resulted from inappropriate use, chemical cleaning or additional impregnation.

Care instructions

You can help to maintain the original beauty of your covering fabric furniture by treating it carefully and caring for it properly. Please therefore heed the following recommendations:

- > Avoid exposing your brand new upholstered furniture to direct sunlight
- > Do not position your new upholstered furniture directly in front of heat sources.
- > Avoid contact between your upholstered furniture and rough clothing.
- > Remove inevitable dust and minor soiling through gentle vacuuming and using a soft upholstery nozzle.

Cleaning

Do not use any abrasive detergents that could damage your new covering fabric. Any stains should be dabbed immediately with a cotton cloth and cleaned in a circular motion working from the outside in. Test any cleaning products on a hidden area first to ascertain their compatibility.

canyon

supplier. **alya** origin. **turkey** type. **artificial leather**
fire reterdant

class A



21728



21745



21747



21748



21749



21750



21751



21753



21754



21755



21757



21758



22658



22661



22662



22663

class A

canyon

PRODUCT SPECIFICATIONS / ÜRÜN ÖZELLİKLERİ			
Technical Informations Test Tipi	Unit Birim	Value Limit	Test Method Norm
Weight Ağırlık	gr. / m ²	700 (±0,05)	TS 6450
Thickness Kalınlık	mm	1,35 (±0,05)	ISO 2589
Width En	cm	140 (±2)	TS 4119
Roll Meter Top Metrajı	mt	30	
Resistance to Abrasion Yıpranma Direnci	martindale	> 100.000	BS EN ISO 12947-2:2016
Tensile Strenght (Lenght) Boyuna Kopma Kuvveti	n	485	ISO 1421
Tensile Strenght (Across) Enine Kopma Kuvveti	n	290	ISO 1421
Elongation Strenght Yırtılma Direnci		Length 68 g Across 240 g	ISO 1421
Colour Fastness to Light Işık Haslıđı		+5	DIN EN ISO 105-B02:1994
Flammability Alev Geciktiricilik		Pass	BS 5852-1:1979
Composition İçerik	80% pvc, 18% polyester, %2 pu		

Product Characteristics

Pigment bleed and colour abrasion may occur with dark and intensive colours. Pilling cannot be avoided and may also occur through the adhesion of fibres from other sources. All flat-woven fabrics may roughen in use and patina and glossy spots may occur. Pulled threads are to be expected if sharp objects catch in the fabric. Depending on the material, a slight striped effect may occur. Light colours will show soiling and jeans abrasion more quickly and clearly than darker colours. A minor loss of colour through exposure to UV rays is unavoidable, particularly with intensive colours. Minor variations in colour and texture between product lots are unavoidable and may occur.

Instructions for use

A certain degree of fading of the colours, due to exposure to light or abrasion through use over time, is also part of the nature of flat-woven fabrics. We do not take over a warranty on damage, which resulted from inappropriate use, chemical cleaning or additional impregnation.

Care instructions

You can help to maintain the original beauty of your covering fabric furniture by treating it carefully and caring for it properly. Please therefore heed the following recommendations:

- > Avoid exposing your brand new upholstered furniture to direct sunlight
- > Do not position your new upholstered furniture directly in front of heat sources.
- > Avoid contact between your upholstered furniture and rough clothing.
- > Remove inevitable dust and minor soiling through gentle vacuuming and using a soft upholstery nozzle.

Cleaning

Do not use any abrasive detergents that could damage your new covering fabric. Any stains should be dabbed immediately with a cotton cloth and cleaned in a circular motion working from the outside in. Test any cleaning products on a hidden area first to ascertain their compatibility.

new sabine

supplier. **alya** origin. **turkey** type. **fabric**
water repellent

class A



antrasit



apricot



aqua



black



blue



brown



cherry



choco



ivory



kiwi



lilac



maroc



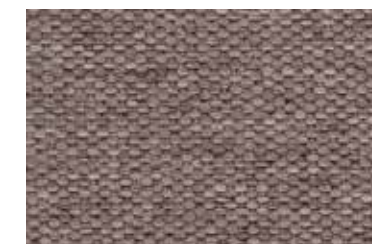
pink



saddle



silver



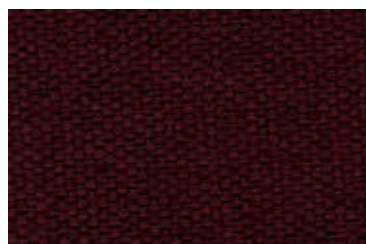
stone



tan



taupe



wine



white

new sabine

supplier. **alya** origin. **turkey** type. **fabric**
water repellent

class A



yellow

class A

new sabine

PRODUCT SPECIFICATIONS / ÜRÜN ÖZELLİKLERİ			
Technical Informations Test Tipi	Unit Birim	Value Limit	Test Method Norm
Weight Ağırlık	gr. / m ²	380	ISO 3801
Width En	cm	137	ISO 22198
Roll Meter Top Metraji	m	50	ISO 12947-2 / ISO 1294
Resistance to Abrasion Yıpranma Direnci	martindale	40.000	BS EN ISO 12947-2
Tear Strength Yırtılma Direnci	weft / atkı warp / çözüğü	154 190	ISO 13937-2
Resistance to Seam Slippage Dikiş Kayma Direnci	weft / atkı warp / çözüğü	0-1 1-2	ISO 13906-2
Pilling Boncuklanma	2000 dvr	4	ISO 12945-2
Light Fastness Işık Haslığı	bright colours / açık renkler dark colours / koyu renkler	5 5	ISO 105-X12
Composition İçerik	100% polyester		

Product Characteristics

Pigment bleed and colour abrasion may occur with dark and intensive colours. Pilling cannot be avoided and may also occur through the adhesion of fibres from other sources. All flat-woven fabrics may roughen in use and patina and glossy spots may occur. Pulled threads are to be expected if sharp objects catch in the fabric. Depending on the material, a slight striped effect may occur. Light colours will show soiling and jeans abrasion more quickly and clearly than darker colours. A minor loss of colour through exposure to UV rays is unavoidable, particularly with intensive colours. Minor variations in colour and texture between product lots are unavoidable and may occur.

Instructions for use

A certain degree of fading of the colours, due to exposure to light or abrasion through use over time, is also part of the nature of flat-woven fabrics. We do not take over a warranty on damage, which resulted from inappropriate use, chemical cleaning or additional impregnation.

Care instructions

You can help to maintain the original beauty of your covering fabric furniture by treating it carefully and caring for it properly. Please therefore heed the following recommendations:

- > Avoid exposing your brand new upholstered furniture to direct sunlight
- > Do not position your new upholstered furniture directly in front of heat sources.
- > Avoid contact between your upholstered furniture and rough clothing.
- > Remove inevitable dust and minor soiling through gentle vacuuming and using a soft upholstery nozzle.

Cleaning

Do not use any abrasive detergents that could damage your new covering fabric. Any stains should be dabbed immediately with a cotton cloth and cleaned in a circular motion working from the outside in. Test any cleaning products on a hidden area first to ascertain their compatibility.

bordeaux

supplier. **arti textile** origin. **belgium** type. **fabric**
easy cleaning / washable at 30°

class A



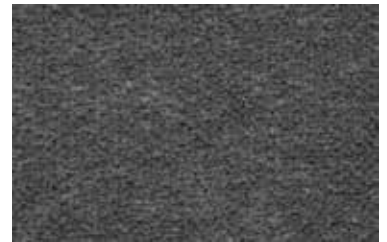
white **02**



sand **04**



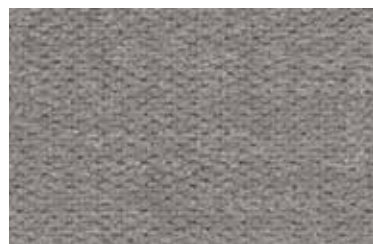
blue **09**



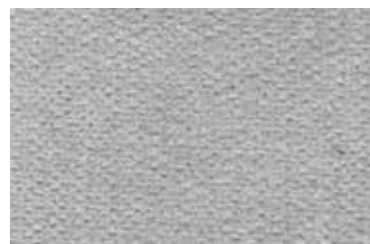
light brown **15**



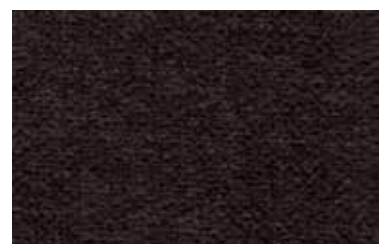
chianti **36**



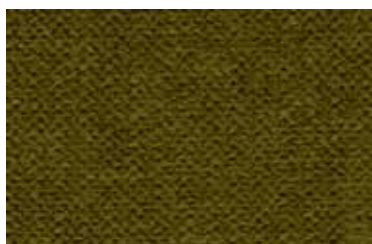
light grey **120**



silver **121**



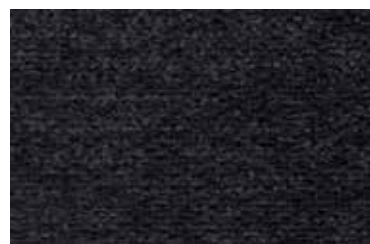
espresso **210**



green **429**



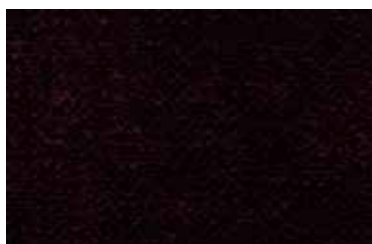
bamboo **430**



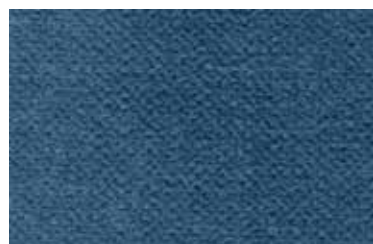
dark grey **484**



mustard **520**



blackberry **550**



azure **705**



petrol **707**



taupe **710**

class A

bordeaux

PRODUCT SPECIFICATIONS / ÜRÜN ÖZELLİKLERİ			
Technical Informations Test Tipi	Unit Birim	Value Limit	Test Method Norm
Weight Ağırlık	gr. / m ²	310	DIN EN 12127
Thickness Kalınlık	mm	1.1	
Width En	cm	140	
Roll Meter Top Metraji	m	35	
Resistance to Abrasion Yıpranma Direnci	martindale	32.000	EN ISO 12947-1,2
Tensile Strength Gerilme Direnci	weft / atkı warp / çözüğü	469.6 1422.9	EN ISO 13934-1
Tear Strength Yırtılma Direnci	weft / atkı warp / çözüğü	45.4 80.4	EN ISO 13937-3
Resistance to Seam Slippage Dikiş Kayma Direnci	weft / atkı warp / çözüğü	3.0 3.0	EN ISO 13936-2
Pilling Boncuklanma		5	EN ISO 12945-2
Rubbing Fastness Sürtünme Haslığı	dry / kuru wet / nemli	5 4	EN ISO 105-X12
Light Fastness Işık Haslığı	bright colours / açık renkler dark colours / koyu renkler	5 5	EN ISO 105-B02
Composition İçerik	100% polyester		

Product Characteristics

Pigment bleed and colour abrasion may occur with dark and intensive colours. Pilling cannot be avoided and may also occur through the adhesion of fibres from other sources. All flat-woven fabrics may roughen in use and patina and glossy spots may occur. Pulled threads are to be expected if sharp objects catch in the fabric. Depending on the material, a slight striped effect may occur. Light colours will show soiling and jeans abrasion more quickly and clearly than darker colours. A minor loss of colour through exposure to UV rays is unavoidable, particularly with intensive colours. Minor variations in colour and texture between product lots are unavoidable and may occur.

Instructions for use

A certain degree of fading of the colours, due to exposure to light or abrasion through use over time, is also part of the nature of flat-woven fabrics. We do not take over a warranty on damage, which resulted from inappropriate use, chemical cleaning or additional impregnation.

Care instructions

You can help to maintain the original beauty of your covering fabric furniture by treating it carefully and caring for it properly. Please therefore heed the following recommendations:

- > Avoid exposing your brand new upholstered furniture to direct sunlight
- > Do not position your new upholstered furniture directly in front of heat sources.
- > Avoid contact between your upholstered furniture and rough clothing.
- > Remove inevitable dust and minor soiling through gentle vacuuming and using a soft upholstery nozzle.

Cleaning

Do not use any abrasive detergents that could damage your new covering fabric. Any stains should be dabbed immediately with a cotton cloth and cleaned in a circular motion working from the outside in. Test any cleaning products on a hidden area first to ascertain their compatibility.

nano soft

supplier. **arti textile** origin. **europa** type. **fabric**
easy cleaning / nano-technology

class A



apple **610**



bambus **430**



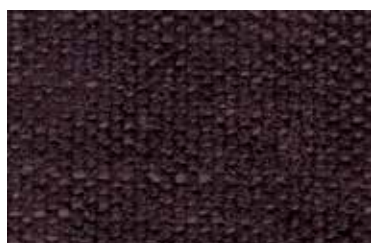
black **17**



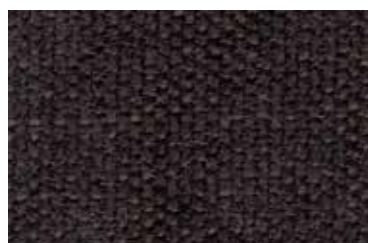
blue **09**



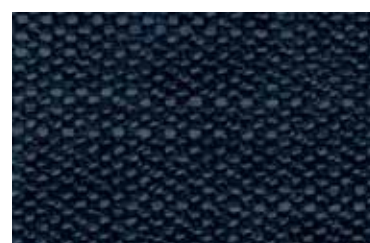
camel **05**



clove **90**



dark grey **484**



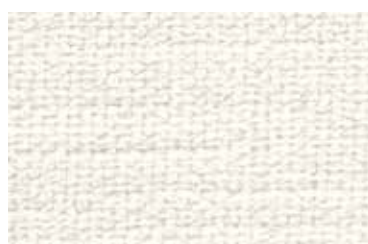
deep blue **1880**



espresso **210**



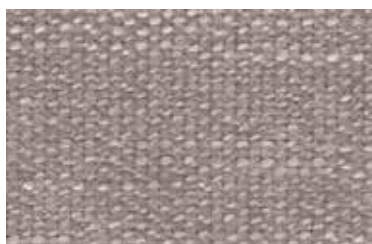
grey **45**



ivory **03**



light brown **15**



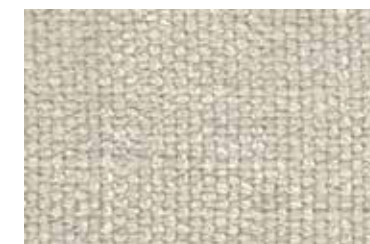
light grey **120**



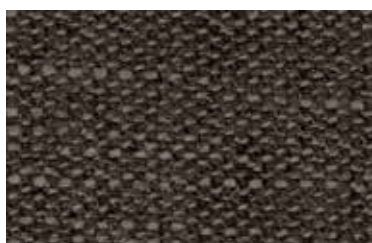
loud red **845**



moon grey **710**



nature **01**



old grey **47**



olive **751**



olive grey **750**

class A

nano soft

PRODUCT SPECIFICATIONS / ÜRÜN ÖZELLİKLERİ			
Technical Informations Test Tipi	Unit Birim	Value Limit	Test Method Norm
Weight Ağırlık	gr. / m ²	510 ±5%	DIN EN 12127
Width En	cm	145	
Roll Meter Top Metraji	m	50	
Resistance to Abrasion Yıpranma Direnci	martindale	45.000	EN ISO 12947-1,2
Tensile Strength Gerilme Direnci	weft / atkı warp / çözgü	1357 1838	EN ISO 13934-1
Tear Strength Yırtılma Direnci	weft / atkı warp / çözgü	143.0 222.0	EN ISO 13937-3
Resistance to Seam Slippage Dikiş Kayma Direnci	weft / atkı warp / çözgü	5.0 3.0	EN ISO 13936-2
Pilling Boncuklanma		4	EN ISO 12945-2
Rubbing Fastness Sürtünme Haslığı	dry / kuru wet / nemli	4-5 4-5	EN ISO 105-X12
Light Fastness Işık Haslığı	bright colours / açık renkler dark colours / koyu renkler	4-5 4-5	EN ISO 105-B02
Composition İçerik	85% polyester, 15% viscose		

Product Characteristics

Pigment bleed and colour abrasion may occur with dark and intensive colours. Pilling cannot be avoided and may also occur through the adhesion of fibres from other sources. All flat-woven fabrics may roughen in use and patina and glossy spots may occur. Pulled threads are to be expected if sharp objects catch in the fabric. Depending on the material, a slight striped effect may occur. Light colours will show soiling and jeans abrasion more quickly and clearly than darker colours. A minor loss of colour through exposure to UV rays is unavoidable, particularly with intensive colours. Minor variations in colour and texture between product lots are unavoidable and may occur.

Instructions for use

A certain degree of fading of the colours, due to exposure to light or abrasion through use over time, is also part of the nature of flat-woven fabrics. We do not take over a warranty on damage, which resulted from inappropriate use, chemical cleaning or additional impregnation.

Care instructions

You can help to maintain the original beauty of your covering fabric furniture by treating it carefully and caring for it properly. Please therefore heed the following recommendations:

- > Avoid exposing your brand new upholstered furniture to direct sunlight
- > Do not position your new upholstered furniture directly in front of heat sources.
- > Avoid contact between your upholstered furniture and rough clothing.
- > Remove inevitable dust and minor soiling through gentle vacuuming and using a soft upholstery nozzle.

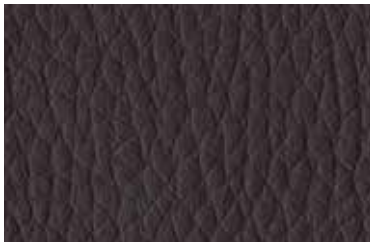
Cleaning

Do not use any abrasive detergents that could damage your new covering fabric. Any stains should be dabbed immediately with a cotton cloth and cleaned in a circular motion working from the outside in. Test any cleaning products on a hidden area first to ascertain their compatibility.

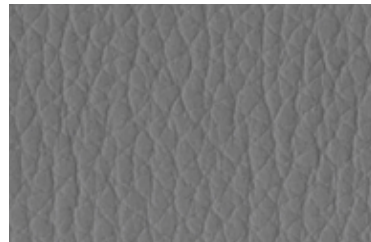
bugatti

supplier. arti textile origin. turkey type. artificial leather
fire-reterdant / anti-bacterial / easy cleaning

class A



60225



60445



60446



60447



60448



60449



60450



60460



60487



60489



60490



60495



60496



60498



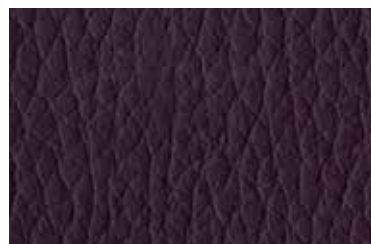
60499



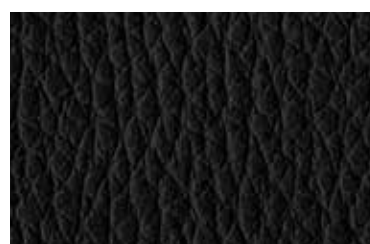
60501



60502



60504



60508

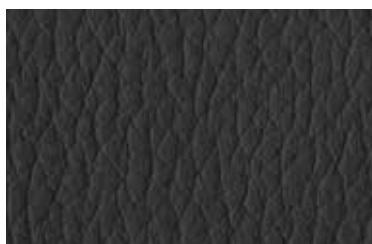


61382

bugatti

supplier. **arti textile** origin. **turkey** type. **artificial leather**
fire-reterdant / anti-bacterial / easy cleaning

class A



61383



61385



60505

class A

bugatti

PRODUCT SPECIFICATIONS / ÜRÜN ÖZELLİKLERİ		
Technical Properties	Results	standards
Composition	81% PVC/ 3% Acrylic PU/ 16% Polyester	EN 12127
Width	140+/-3 cm	
Weight	650 g/m ²	
Roll Length	35 m	
Physical Properties		
Waterproof	yes	EN20811
Colour Fastness to Light Outdoor	6-7	ISO 105 B04
Weathering UV Test	4	ISO 4892-2
Colour Fastness to Chlorine, Salt Water	4-5	ISO 105 E03
Tensile Strength (warp/weft) N[%]	512 [55,7], 620 [78]	ISO 13934-1
Tensile Elongation (warp/weft)	41,43	ISO 1421
Tearing Strength (warp/weft)	26,28	ISO 4674
Abrasion Resistance (Martindale)	200.000 cycles	ISO 12947-2
Flexing Endurance	no damage at 100000 cycles	ISO 32100
Microbial and Fungal Resistance	degree 0, excellent	ISO 846/AATCC 147
Extreme Exposure Temperatures	-23°C / +80°C	
Coating Adhesion (warp/weft)	42,39	ISO 2411
Anti-Static	against dust	
FR Standards		
France	M2	NFP 503,504,505 optional
Germany	B1	DIN 4102 optional
Italy	Classe Uno	UNI 9175 and UNI 9177
Europe	pass	EN 1021-1,2
United Kingdom	Crib 5	BS 5852 optional
United Kingdom	pass	BS 5852 source 0, 1 cig and match
USA	pass	NFPA 260A/UFAC Class 1
USA	pass	CAL 117
Marine	pass	IMO FTPC P8
Aeronautical	pass	NY/NJ Port authority FAR Part 25.853
Management Systems		
Environment and Health		No Bisphenol A (BPA)
		Oekotex 100 class IV
		REACH certified
		Phthalate free
		Bromine free no halogenated FR chemicals
		Non-Toxic

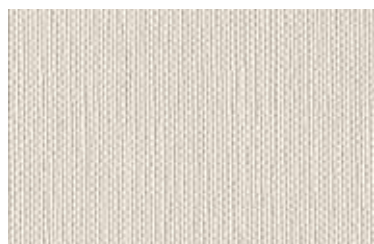
Care and cleaning instructions

Clean regularly with a damp cloth, use water with a mild soap, no aggressive nor abrasive detergents, no wax.
This information is not a guarantee and does not relieve the user from the responsibility of the proper and safe use of the product and all cleaning agents. Please check compatibility when using this product in combination with painted or varnished surfaces.

whisper

supplier. **arti textile** origin. **turkey** type. **artificial leather**
fire-reterdant / anti-bacterial / easy cleaning / outdoor

class A



40430



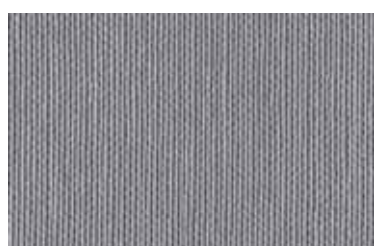
39130



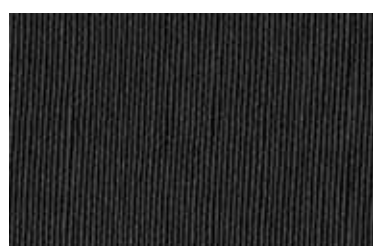
42951



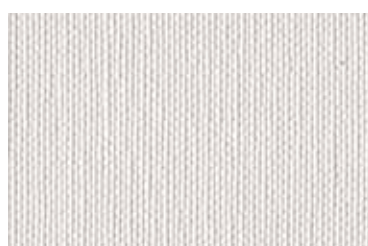
40411



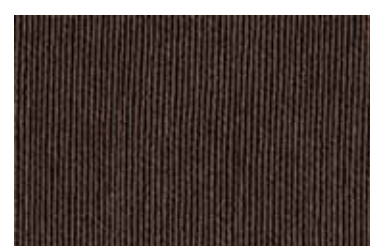
40413



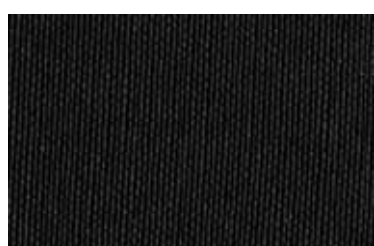
40415



40492



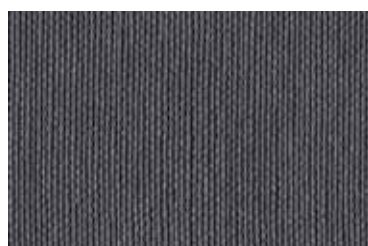
40434



40435



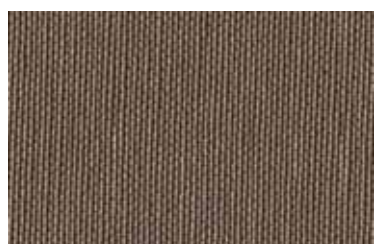
40603



40604



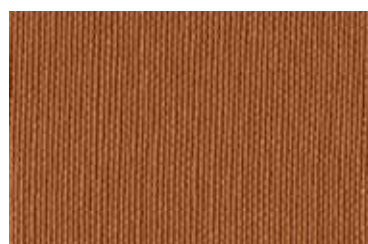
40606



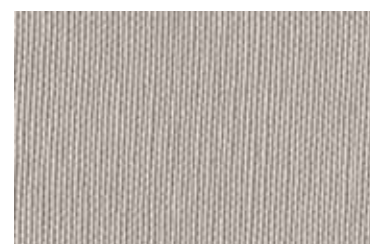
40612



41942



43174



42948



42953

class A

whisper

PRODUCT SPECIFICATIONS / ÜRÜN ÖZELLİKLERİ			
Technical Informations Test Tipi	Unit Birim	Value Limit	Test Method Norm
Roll Width En	n	140 cm (+/-2%)	
Roll Length (average) Boy	m	3 / 50	
Weight Ağırlık		900 g/l	
Tensile Strength Yıpranma Direnci	warp / çözüğü weft / atkı	612 n 75,7% 620 n 75,7%	EN ISO 13934-1
Tear Growth Resistance Yırtılma Direnci	warp / çözüğü weft / atkı	28,7 n 60,3 n	EN ISO 13937
Seam Slippage Resistance Dikiş Kayma Direnci	warp / çözüğü weft / atkı	3,0 mm 3,0 mm	EN ISO 13936-2
Colour Fastness to Rubbing Sürtünme Renk Haslığı	wet / ıslak dry / kuru	5 5	EN ISO 105-X12
Resistance to Abrasion Yıpranma Direnci	martindale	> 300.000	EN ISO 12947-2
Colour Fastness to Artificial Light Yapay Işık Renk Haslığı		7	EN ISO 105-B02
Composition İçerik	3% pu, 82% pvc, 15% polyester		

Clean & Care Recommendations

- To remove dust use a vacuum cleaner.
- Any stain, spills or soiling should be cleaned up promptly with a neutral soap solution using a cloth in smooth circular movements.
- We do not accept responsibility for any damage resulting from inappropriate use, chemical cleaning or additional impregnation.
- The analytical results are referred only to the sample tested.
- Discolouration and colour deviations tolerated by permissible industrial standards which do not constitute reasons for claims.
- We reserve the right to modify, at any moment and without notice any product specifications.

Applications & Features

- Resistance to Hydrolysis
- Fire proof norms
BS 5852 Part I - Cigarette Test - PASS
EN1021-1-Cigarette Test - PASS
- Durability performance
- Anti-bacterial
- Anti-mildew
- Easy to Clean
- Azo Dyes Free
- Phthalates Free
- DMF Free

nona fr

supplier. sertex origin. turkey type. artificial leather
fire-reterdant

class A



020 bej



030 k. bej



120 hardal



270 bordo



310 taba



320 tarçın



330 kahve



340 bitter



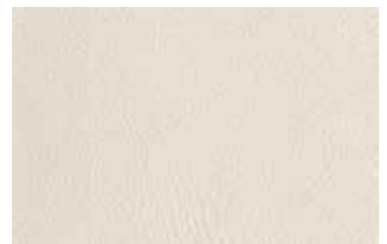
440 k. yeşil



520 petrol



540 lacivert



006 a. bej



610 a. gri



660 antrasit



901 siyah

class A

nona fr

PRODUCT SPECIFICATIONS / ÜRÜN ÖZELLİKLERİ				
Technical Informations Test Tipi	Unit Birim	Value Limit	Test Method Norm	
Weight Ağırlık	gr. / m ²	650±5%	ISO 2686-2	
Thickness Kalınlık	mm	1,15±5%	ISO 2686-3	
Tensile Strenght Kopma	n	across / en along / boy	min. 245 min. 400	ISO 1421
Tear Strenght Yırtılma	n	across / en along / boy	min. 30 min. 25	ISO 46742
Elongation at Break Uzama	%	across / en along / boy	min. 200±20% min. 60±20%	ISO 1421
Peel Adhesion Yapışma	n		min. 40	ISO 2411
Flexing Endurance Bükülme	flx		min. 200.000	ISO 7854
Resistance to Abrasion Aşınma	rub		min. 100.000	DIN 53863
Color Fastness to Rubbing Sürtünme Renk Haslıđı	gs		>5	ISO 105X12
Light Fastness Işık Haslıđı	bw	light colors (açık) dark colors (koyu)	>5 >5	ISO 105B02
Fire Resistance Standarts Alev Geciktirici Standartları	• Cal TB 116 & 117/ NFPA 260 (USA) • BS 5852 Part I Ignition Source 1 (Cigarette & Match) • IMO FTP Code Annex 1 Part 8 • EN 1021 Part 1 & 2			
Composition İçerik	2% vinyl acrylic lacquer, 78% polyvinyl chloride, 20% polyester			

Cleaning Instructions

Liquid Stains

Blot the liquid stain gently with a high-absorbent material. Pat dry the area gently with a dry material to remove the remaining humidity (cotton cloth, paper towel, etc.). If the stain from the spill remains, remove the stain with a soapy cloth without diffusing the stain. After each rubbing motion, refresh the clean soapy cloth in order to prevent soiling.

Solid Particles

Remove the excess soiling with ultimate care without diffusing. Remove the solid particle from the fabric surface with the help of a soft spatula. To remove dust, use a vacuum cleaner or a soft brush. The remaining stains should be removed by rubbing with a soapy cloth in circular motion.

Alcohol Derives

Petroleum and alkali based solvents should not be used for cleaning. After all cleaning processes, the drying should be done with a low temperature blow dryer in large circular motion or the fabric should be left for natural drying. Only dry clean.

vista

supplier. **sertex** origin. **turkey** type. **fabric**
washable at 30°

class A



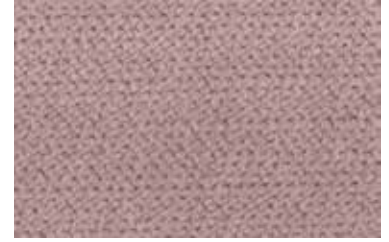
003 ekru



012 kum



016 başak



090 gül



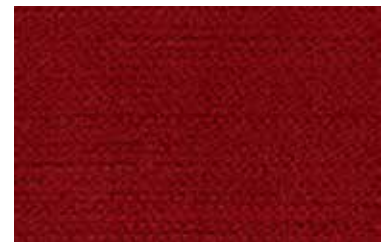
120 sarı



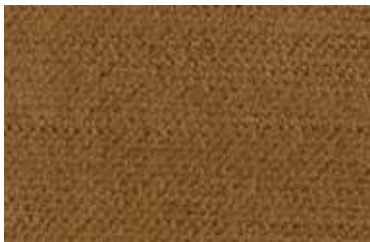
205 pudra



225 tarçın



240 bordo



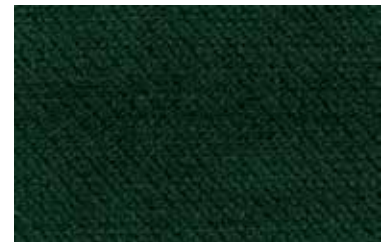
312 safran



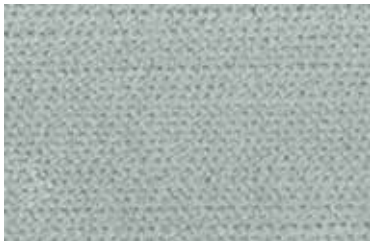
330 kahve



430 yeşil



440 zümrüt



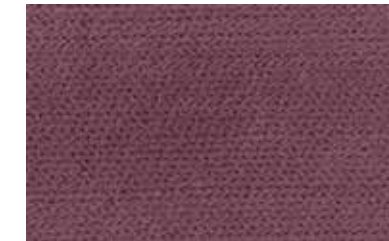
505 bulut



550 turkuaz



560 lacivert



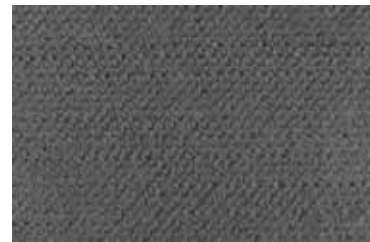
570 a. mor



580 mürdüm



610 gri



620 füme



901 vista

vista

supplier. **sertex** origin. **turkey** type. **fabric**
washable at 30°

class A



420 çağla



310 vizon

class A

vista

PRODUCT SPECIFICATIONS / ÜRÜN ÖZELLİKLERİ				
Technical Informations Test Tipi	Unit Birim	Value Limit	Test Method Norm	
Weight Ağırlık	gr / m ²	550g / m ² ±5%	ISO 2686-2	
Resistance to Abrasion Aşınma	martindale	100.000	ISO 12947-2:1998	
Light Fastness Işık Haslıđı	bw	5	BS EN ISO 105B02:1999	
Color Fastness to Light Renk Haslıđı	gs	wet / ıslak dry / kuru	4/5 4/5	BS EN ISO 105 X12:2002
Pilling Resistance Tüylene Direnci		4/5	ISO 12945-2:2000	
Width En	cm	140 min.		
Composition İçerik	100% polyester			

Cleaning Instructions

Liquid Stains

Blot the liquid stain gently with a high-absorbent material. Pat dry the area gently with a dry material to remove the remaining humidity (cotton cloth, paper towel, etc.). If the stain from the spill remains, remove the stain with a soapy cloth without diffusing the stain. After each rubbing motion, refresh the clean soapy cloth in order to prevent soiling.

Solid Particles

Remove the excess soiling with ultimate care without diffusing. Remove the solid particle from the fabric surface with the help of a soft spatula. To remove dust, use a vacuum cleaner or a soft brush. The remaining stains should be removed by rubbing with a soapy cloth in circular motion.

Alcohol Derives

Petroleum and alkali based solvents should not be used for cleaning. After all cleaning processes, the drying should be done with a low temperature blow dryer in large circular motion or the fabric should be left for natural drying. Only dry clean.

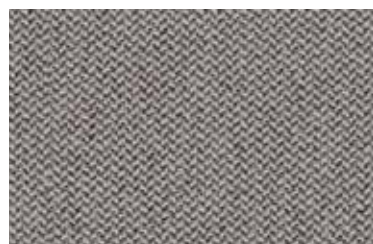
era

supplier. **camira** origin. **england** type. **fabric**
fire retardant / washable at 60°

class A



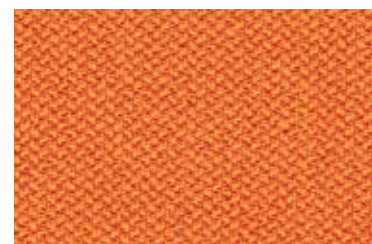
futurist **cse01**



generation **cse02**



lifetime **cse03**



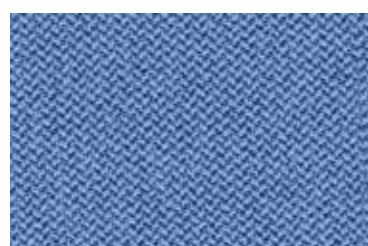
span **cse05**



cycle **cse06**



period **cse07**



chapter **cse08**



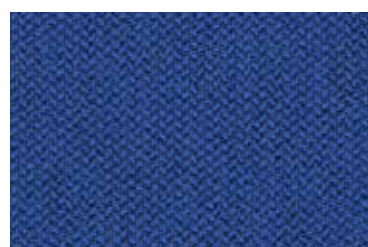
prime **cse09**



everlasting **cse10**



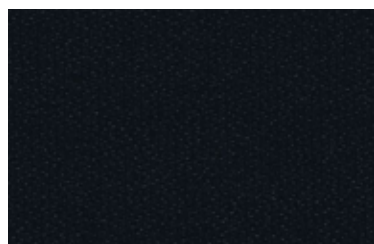
forecast **cse11**



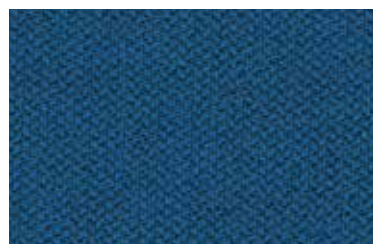
perennial **cse12**



present **cse13**



forward **cse14**



stage **cse15**



timelapse **cse16**



phase **cse17**



event **cse18**



calendar **cse19**



aeon **cse20**



history **cse21**

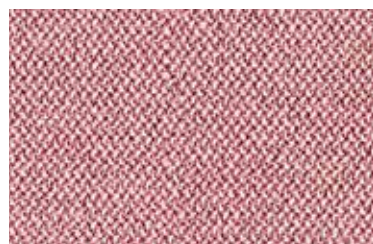
era

supplier. **camira** origin. **england** type. **fabric**
fire reterdant / washable at 60°

class A



occurrence **cse23**



date **cse24**



sequence **cse25**



turn **cse26**



measure **cse27**



extent **cse28**



experience **cse29**



transition **cse30**



splitsecond **cse31**



occasion **cse32**



analogue **cse33**



endurance **cse34**



signature **cse35**



notation **cse36**



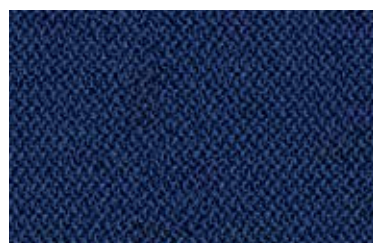
rest **cse37**



allowance **cse38**



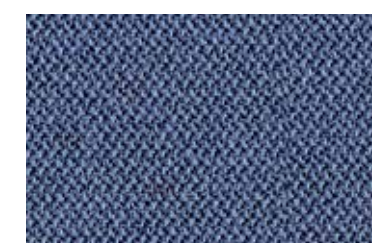
youth **cse39**



maturity **cse40**



quota **cse41**



range **cse42**

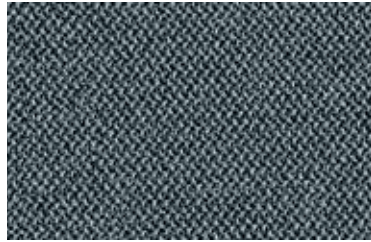
era

supplier. **camira** origin. **england** type. **fabric**
fire reterdant / washable at 60°

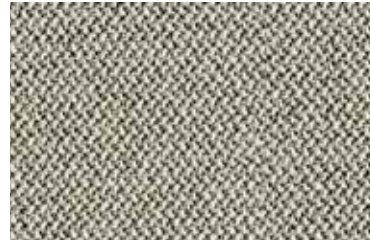
class A



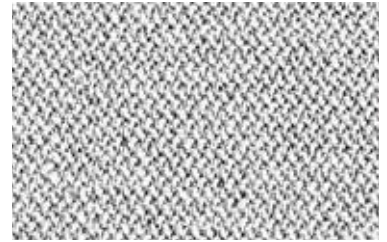
late **cse43**



elapse **cse44**



prompt **cse45**



memo **cse46**

class A

era

PRODUCT SPECIFICATIONS / ÜRÜN ÖZELLİKLERİ			
Technical Informations	Unit	Value	Test Method
Weight	gr. / m ²	320g / m ² ±5% (450g / lin.m ±5%)	
Width	mm	140	
Abrasion Resistance	10 year guarantee / 100.000 martindale cycles		
Flammability			BS EN 1021 - 1:2014 BS EN 1021 - 2:2014 BS 7176:2007 low hazard
Light Fastness		5	ISO 105 - B02:2013
Fastness to Rubbing		wet: 4 dry: 4	ISO 105 - X12:2002
Composition	100% polyester		

Cleaning

Washable to 60°C. Wipe clean with a damp cloth or shampoo using proprietary upholstery shampoo.

Please note that seam performance is dependent on seam construction and needle and thread type. We recommend that appropriate sewing advice be taken.

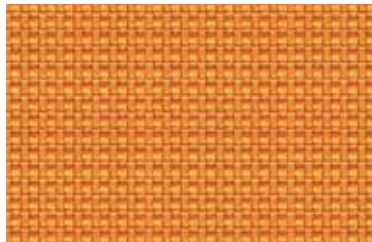
Note

Batch to batch variations in shade may occur within commercial tolerances. We reserve the right to alter technical specifications without notice. The Unregistered Design Rights and the Copyright in all designs are the exclusive property of Camira Fabrics Limited.

urban

supplier. **camira** origin. **england** type. **fabric**
fire-reterdant / environmental / recycled

class A



avenue **yn148**



bench **yn091**



boulevard **yn160**



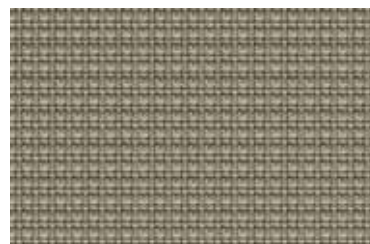
congestion **yn079**



conurbation **yn082**



cosmopolitan **yn203**



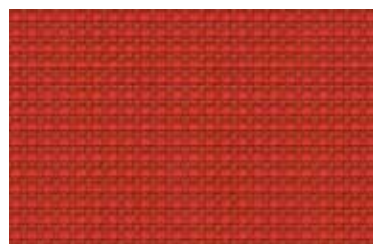
district **yn212**



freeway **yn211**



graffiti **yn204**



highrise **yn076**



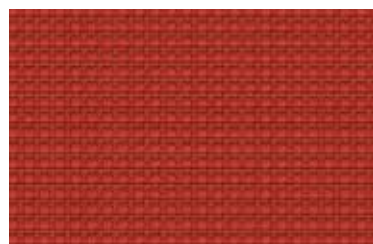
intersection **yn205**



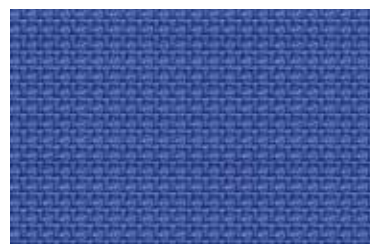
nightowl **yn210**



penthouse **yn202**



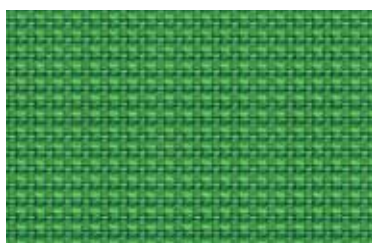
precinct **yn027**



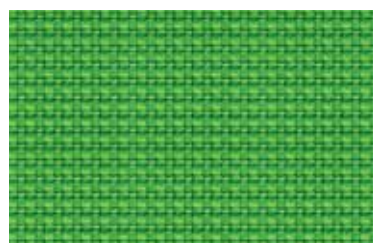
ringroad **yn208**



streetsmart **yn209**



suburbia **yn159**



uptown **yn200**



curb **yn206**

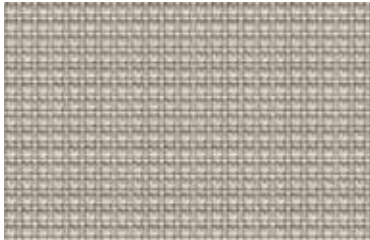


junction **yn083**

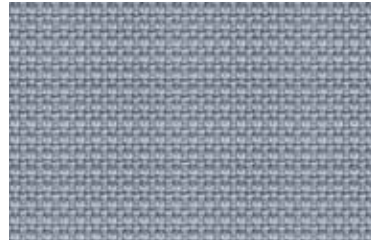
urban

supplier. **camira** origin. **england** type. **fabric**
fire-reterdant / environmental / recycled

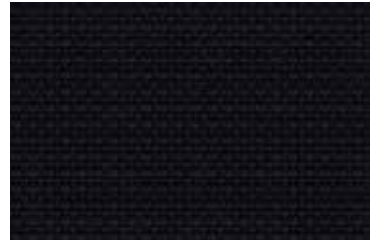
class A



living **yn108**



sidewalk **yn094**



subway **yn009**



underground **yn145**



square **yn207**

class A

urban

PRODUCT SPECIFICATIONS / ÜRÜN ÖZELLİKLERİ			
Technical Informations	Unit	Value	Test Method
Weight	gr. / m ²	320g / m ² ±5% (450g / lin.m ±5%)	
Width	mm	140	
Abrasion Resistance	10 year guarantee / 100,000 Martindale cycles		
Flammability			BS EN 1021 - 1:2006 BS EN 1021 - 2:2006 BS 7176:2007 low hazard BS 5852:2006 section 4 ignition source 5 BS 7176:2007 medium hazard DIN 4102 B1 NF D 60-013 : 2006 NF-P-92-507M1 UNI 8456 & UNI 9174 Classe 1
Light Fastness		6	ISO 105 - B02:2013
Fastness to Rubbing		wet: 4 dry: 4	ISO 105 - X12:2002
Composition	100% recycled flame retardant polyester		

Cleaning

Washable to 60°C Wipe clean with a damp cloth or shampoo using proprietary upholstery shampoo.

Note

Batch to batch variations in shade may occur within commercial tolerances. We reserve the right to alter technical specifications without notice. The Unregistered Design Rights and the Copyright in all designs are the exclusive property of Camira Fabrics Limited.

* Tested in accordance with BS EN 14465. Please note that seam performance is dependent on seam construction and needle and thread type. We recommend that appropriate sewing advice be taken.

x2

supplier. **camira** origin. **england** type. **fabric**
fire-reterdant / environmental / recycled // washable at 600

class A



ratio **ak001**



polygon **ak002**



fraction **ak003**



equation **ak004**



algebra **ak005**



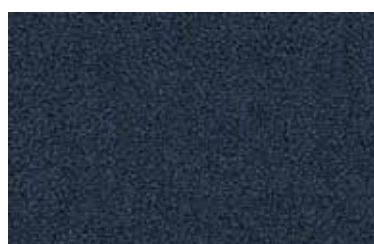
value **ak006**



maths **ak007**



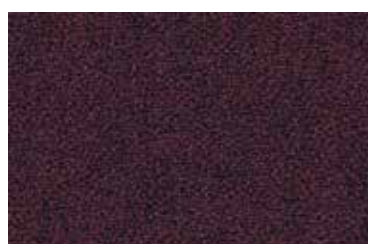
calculus **ak008**



acute **ak009**



metric **ak010**



median **ak011**



add **ak012**



subtract **ak013**



multiply **ak014**



divide **ak015**



percentage **ak016**



formula **ak017**



arithmetic **ak018**



positive **ak019**



number **ak020**

class A

x2

PRODUCT SPECIFICATIONS / ÜRÜN ÖZELLİKLERİ			
Technical Informations	Unit	Value	Test Method
Weight	gr. / m ²	310g / m ² ±5% (435g / lin.m ±5%)	
Width	mm	140	
Abrasion Resistance	10 year guarantee / 100.000 martindale cycles		
Flammability			BS EN 1021 - 1:2014 BS EN 1021 - 2:2014 BS 5852:2006 section 4 ignition source 5 BS 7176:2007 medium hazard DIN 4102 B1 NF D 60-013:2006 UNI 9175 1M
Light Fastness		6	ISO 105 - B02:2014
Fastness to Rubbing		wet: 4 dry: 4	BS EN ISO 105 - X12:2002
Environmental	rapidly renewable and compostable		
Composition	100% recycled flame retardant polyester		

Cleaning

Washable to 60°C. Wipe clean with a damp cloth or shampoo using proprietary upholstery shampoo.

Please note that seam performance is dependent on seam construction and needle and thread type. We recommend that appropriate sewing advice be taken.

Note

Batch to batch variations in shade may occur within commercial tolerances. We reserve the right to alter technical specifications without notice. The Unregistered Design Rights and the Copyright in all designs are the exclusive property of Camira Fabrics Limited.

xtreme

supplier. **camira** origin. **england** type. **fabric**
fire-reterdant / environmental / washable at 60° / recycled

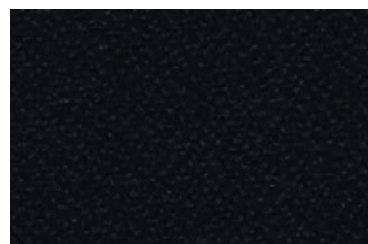
class A



martinique **ys004**



curacao **ys005**



havana **ys009**



cayman **ys024**



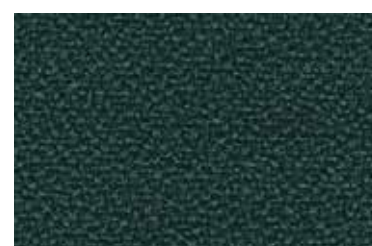
costa **ys026**



tobago **ys030**



honeymoon **ys035**



taboo **ys045**



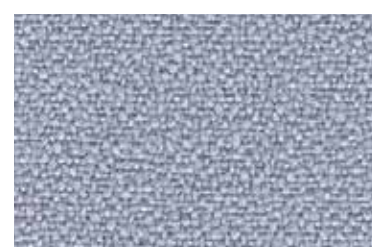
sombrero **ys046**



windjammer **ys047**



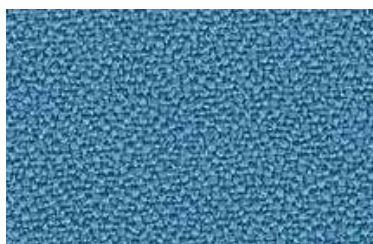
sandstorm **ys071**



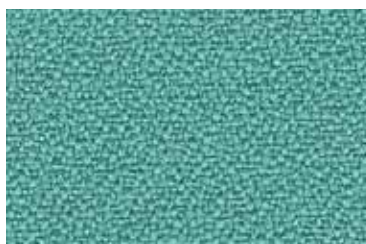
rum **ys173**



solano **ys072**



parasol **ys073**



campeche **ys074**



lobster **ys076**



appledore **ys077**



panama **ys079**



blizzard **ys081**



scuba **ys082**

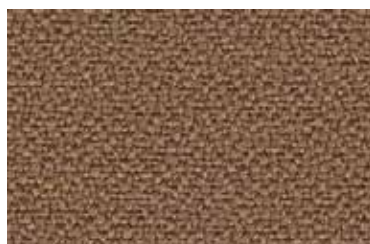
xtreme

supplier. **camira** origin. **england** type. **fabric**
fire-reterdant / environmental / washable at 60° / recycled

class A



tarot **ys084**



nougat **ys091**



slip **ys094**



steel **ys095**



apple **ys096**



bluebell **ys097**



ocean **ys100**



diablo **ys101**



bridgetown **ys102**



belize **ys105**



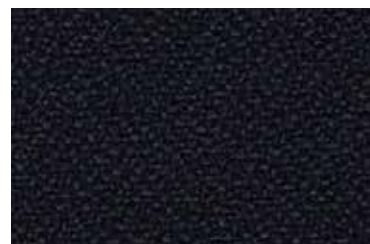
aruba **ys108**



tokara **ys136**



krabi **ys141**



padang **ys145**



madura **ys156**



lombok **ys159**



tonga **ys160**



adobo **ys165**



tortuga **ys168**



osumi **ys171**

xtreme

supplier. **camira** origin. **england** type. **fabric**
fire-reterdant / environmental / washable at 60° / recycled

class A



bonaire **YS172**

class A

xtreme

PRODUCT SPECIFICATIONS / ÜRÜN ÖZELLİKLERİ			
Technical Informations	Unit	Value	Test Method
Weight	gr. / m ²	310g / m ² ±5% (435g / lin.m ±5%)	
Width	mm	140	
Abrasion Resistance	10 year guarantee / 100.000 martindale cycles		
Flammability			BS EN 1021 - 1:2014 BS EN 1021 - 2:2014 BS 7176:2007 low hazard BS 5852:2006 section 4 ignition source 5 BS 7176:2007 medium hazard DIN 4102 B1 UNI 8456 & UNI 9174 Classe 1
Light Fastness		6	ISO 105 - B02:2014
Fastness to Rubbing		wet: 4 dry: 4	BS EN ISO 105 - X12:2002
Environmental	rapidly renewable and compostable		
Composition	100% recycled flame retardant polyester		

Cleaning

Washable to 60°C. Wipe clean with a damp cloth or shampoo using proprietary upholstery shampoo.

Please note that seam performance is dependent on seam construction and needle and thread type. We recommend that appropriate sewing advice be taken.

Note

Batch to batch variations in shade may occur within commercial tolerances. We reserve the right to alter technical specifications without notice. The Unregistered Design Rights and the Copyright in all designs are the exclusive property of Camira Fabrics Limited.

aspect

supplier. **camira** origin. **england** type. **fabric**
fire-reterdant / washable at 60°

class B



atacama **act01**



amalfi **act02**



marrakech **act03**



cappadocia **act04**



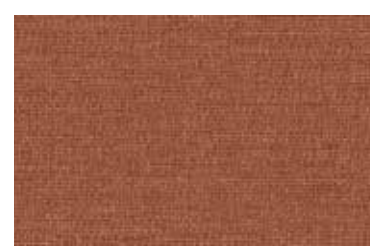
halong **act05**



calabria **act06**



petra **act07**



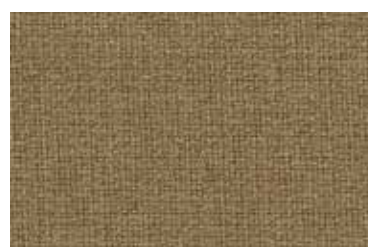
meteora **act08**



zion **act09**



capones **act10**



palenque **act11**



gorkha **act12**



sahara **act13**



yosemite **act14**



bamburgh **act15**



serengeti **act16**



catbells **act17**



patagonia **act18**



matterhorn **act19**



penyghent **act20**

aspect

supplier. **camira** origin. **england** type. **fabric**
fire-reterdant / washable at 60°

class B



jasper **act21**



como **act22**



lucerne **act23**



rainer **act24**



otago **act25**



molokai **act26**



everest **act27**



dolomites **act28**



malham **act29**



galapagos **act30**



aurora **act31**

class B

aspect

PRODUCT SPECIFICATIONS / ÜRÜN ÖZELLİKLERİ			
Technical Informations	Unit	Value	Test Method
Weight	gr. / m ²	325g / m ² ±5% (455g / lin.m ±5%)	
Width	mm	140	
Abrasion Resistance	10 year guarantee / 50.000 martindale cycles		
Flammability			BS EN 1021 - 1:2014 BS EN 1021 - 2:2014 BS 7176:2007 low hazard BS 7176:2007 medium hazard BS 5852:2006 Section 4 ignition source 5 DIN 4102 B1 UNI 9175 Classe 1 IM ÖNORM B 3825 & A 3800
Light Fastness		5	ISO 105 - B02:2014
Fastness to Rubbing		wet: 4 dry: 4	BS EN ISO 105 - X12:2002
Composition	75% trevira CS® flame retardant polyester, 25% polyester		

Cleaning

Washable to 60 C. Wipe clean with a damp cloth or shampoo using proprietary upholstery shampoo.

Note

Why go round in circles with numbers? Camira recognise that the number of Martindale cycles does not reflect the actual wear performance of fabrics. We're so confident in the durability of our products that we provide a robust 10 year guarantee (full details available). This range is externally certified, details of which are on our website and available from our customer services team.

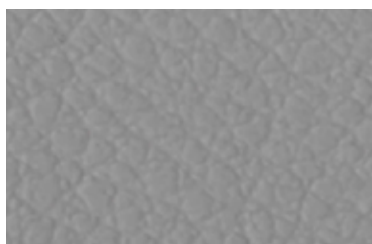
Please note that seam performance is dependent on seam construction and needle and thread type. We recommend that appropriate sewing advice be taken.

Batch to batch variations in shade may occur within commercial tolerances. We reserve the right to alter technical specifications without notice. The Unregistered Design Rights and the Copyright in all designs are the exclusive property of Camira Fabrics Limited

vita

supplier. **camira** origin. **england** type. **artificial leather**
fire-reterdant / anti-microbial / waterproof / stain resistant

class B



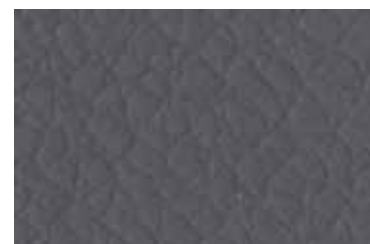
seal **ita01**



oatmeal **ita02**



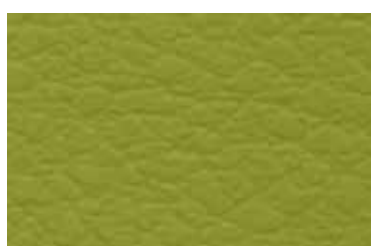
yellow **ita03**



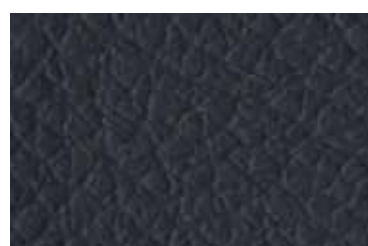
koala **ita04**



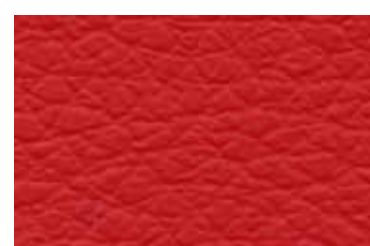
squash **ita05**



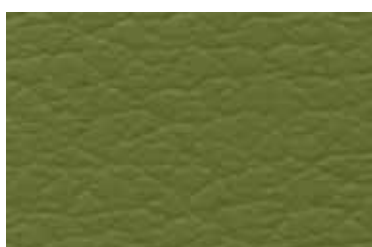
avocado **ita06**



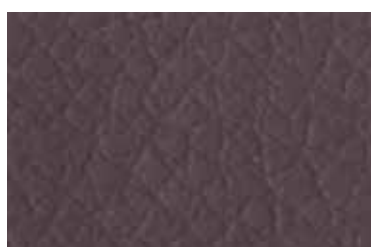
hippo **ita07**



tomato **ita08**



olive **ita09**



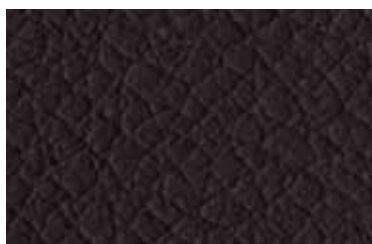
taupe **ita10**



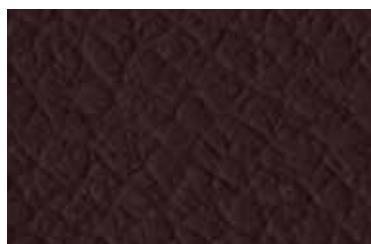
rust **ita11**



noir **ita12**



americano **ita13**



espresso **ita14**



porcelain **ita15**



sapphire **ita16**



amethyst **ita17**



waterfall **ita18**



peacock **ita19**



pink **ita20**

vita

supplier. **camira** origin. **england** type. **artificial leather**
fire-reterdant / anti-microbial / waterproof / stain resistant

class B



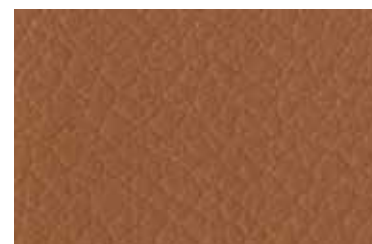
marina **ita21**



navy **ita22**



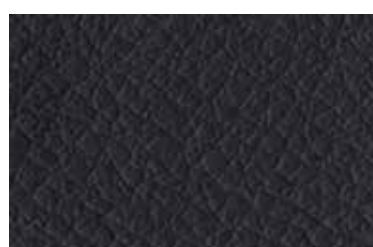
plum **ita23**



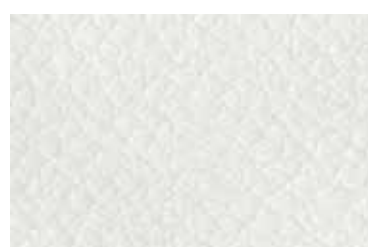
alpaca **ita46**



amplified **ita52**



beetle **ita47**



bone **ita38**



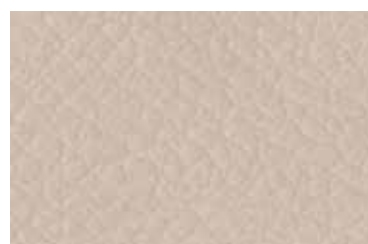
breeze **ita32**



bubbles **ita36**



carrot **ita41**



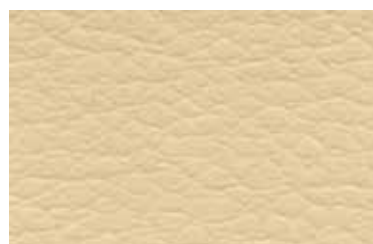
chiffon **ita44**



clash **ita56**



cornsilk **ita37**



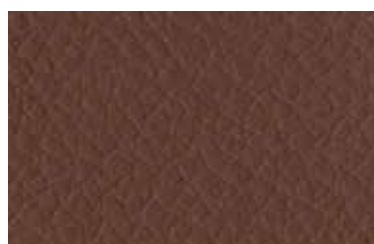
daisy **ita43**



envy **ita55**



flamingo **ita34**



golden **ita39**



hollyhock **ita51**



lemon **ita33**



pigeon **ita45**

vita

supplier. **camira** origin. **england** type. **artificial leather**
fire-reterdant / anti-microbial / waterproof / stain resistant

class B



punch **ita35**



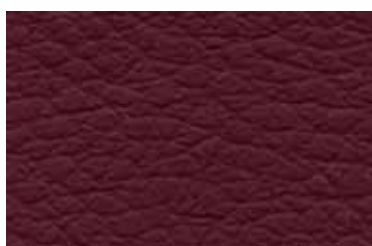
rocker **ita53**



sail **ita54**



seaweed **ita31**



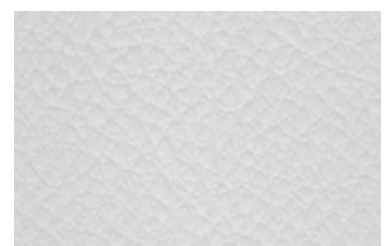
sin **ita50**



spring **ita40**



surf **ita48**



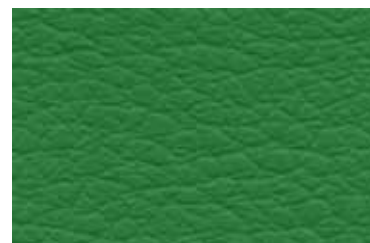
swan **ita42**



wisteria **ita49**



wreath **ita29**



yucca **ita30**

class B

vita

PRODUCT SPECIFICATIONS / ÜRÜN ÖZELLİKLERİ			
Technical Informations	Unit	Value	Test Method
Weight	gr. / m ²	850g / m ² ±10% (1190g / lin.m ±10%)	
Width	mm	140	
Abrasion Resistance	5 year guarantee / 100.000 martindale cycles		BS EN ISO 5470-2:2003
Flexes	400.000 flexing cycles		BS EN ISO 7854: 1997
Flammability			BS EN 1021 - 1:2014 BS EN 1021 - 2:2014 BS EN 7176: 2007 low hazard BS 5852:2006 Section 4 Ignition Source 5 BS 7176:2007 medium hazard NF P 92-503 M2 FMVSS 302 (ISO 3795) FAR/JAR 25:853 ECE regulation No. 118
Light Fastness		6	BS EN ISO 105 - B02:2014
Lot Light Fastness		7	BS EN ISO 105 - B06:2004
Fastness to Rubbing		wet: 4 dry: 4	BS EN ISO 105 - X12:2002
Bleach cleanable			BS EN ISO E03 colour change 4 for 10% chlorine solution
Urea resistance			BS 3424
Residual Extension			BS EN ISO 14704-1: 2005
Anti-microbial / Anti-fungal			AATCC 147:2011
Phthalate Free			BS EN 15777: 2009
Composition	surface: 98.5% pvc, 1.5% pu substrate: 50% polyester, 50% cotton		

Reach
Contains no heavy metals or Dimethyl Formamide

Cleaning
Wipe with a damp cloth and warm soapy water. Improved resistance to alcohol but avoid regular use and remove residue where possible. For full details, see vinyl technical guide.

Note
Batch to batch variations in shade may occur within commercial tolerances. We reserve the right to alter technical specifications without notice. The Unregistered Design Rights and the Copyright in all designs are the exclusive property of Camira Fabrics Limited.

main line flax

supplier. **camira** origin. **england** type. **fabric**
fire-reterdant / environmental

class C



aldgate **mlf01**



archway **mlf02**



barbican **mlf03**



euston **mlf04**



holborn **mlf05**



kilburn **mlf06**



kensington **mlf07**



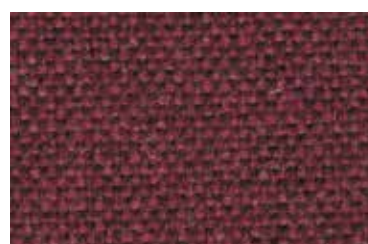
lambeth **mlf08**



monument **mlf09**



newbury **mlf10**



wembley **mlf11**



morden **mlf12**



leyton **mlf13**



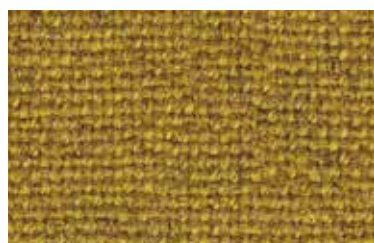
parsons **mlf14**



stockwell **mlf15**



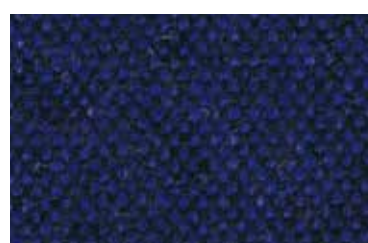
temple **mlf16**



tooting **mlf17**



tufnell **mlf18**



victoria **mlf19**



upminster **mlf20**

main line flax

supplier. **camira** origin. **england** type. **fabric**
fire-reterdant / environmental

class C



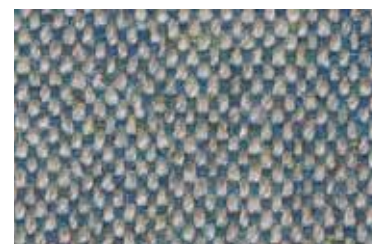
waterloo **mlf21**



westminster **mlf22**



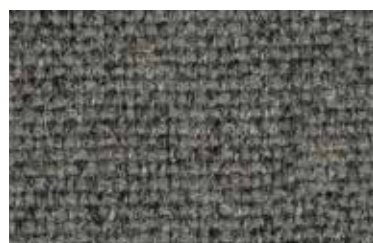
bank **mlf23**



bayswater **mlf24**



bethnal **mlf25**



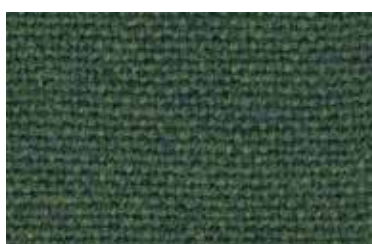
camden **mlf26**



charing **mlf27**



edgware **mlf28**



farringdon **mlf29**



finsbury **mlf30**



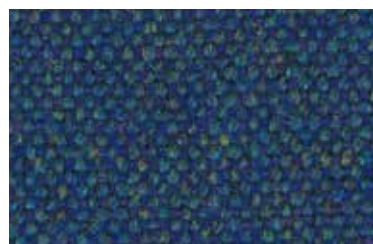
goldhawk **mlf31**



greenford **mlf32**



highgate **mlf33**



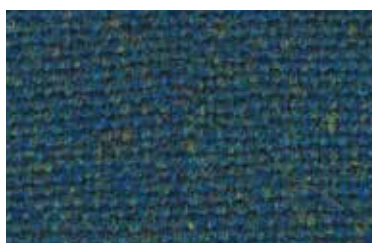
pimlico **mlf34**



brompton **mlf35**



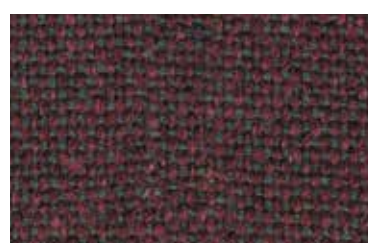
tower **mlf36**



stanmore **mlf37**



russell **mlf38**



paddington **mlf39**



northfields **mlf40**

main line flax

supplier. **camira** origin. **england** type. **fabric**
fire-reterdant / environmental

class C



hillington **mlf41**

class C

main line flax

PRODUCT SPECIFICATIONS / ÜRÜN ÖZELLİKLERİ			
Technical Informations	Unit	Value	Test Method
Weight	gr. / m ²	335g / m ² ±5% (610g / lin.m ±5%)	
Width	mm	140	
Abrasion Resistance	10 year guarantee / 50.000 martindale cycles		
Flammability			BS EN 1021 - 1:2014 BS EN 1021 - 2:2014 BS 7176:2007 low hazard BS 5852:2006 section 4 ignition source 5 BS 7176:2007 medium hazard BS 5867-2: Type B
Light Fastness		5	ISO 105 - B02:2014
Fastness to Rubbing		wet: 3 dry: 4	ISO 105 - X12:2002
Environmental	rapidly renewable and compostable		
Composition	70% virgin wool, 30% flax		

Cleaning

Vacuum regularly. Professionally dry clean or wipe clean with a damp cloth.

Note

Batch to batch variations in shade may occur within commercial tolerances. We reserve the right to alter technical specifications without notice. The Unregistered Design Rights and the Copyright in all designs are the exclusive property of Camira Fabrics Limited.

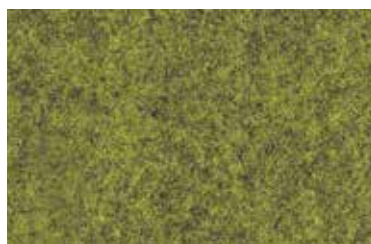
blazer

supplier. **camira** origin. **england** type. **fabric**
fire-reterdant / environmental

class D



surrey **cuz1e**



ulster **cuz1f**



aberlour **cuz1j**



camphill **cuz1k**



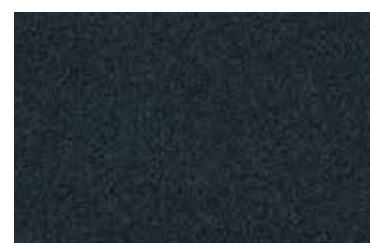
newport **cuz1l**



glasgow **cuz1m**



cardiff **cuz1n**



hull **cuz1p**



plymouth **cuz1r**



sheffield **cuz1t**



manchester **cuz1v**



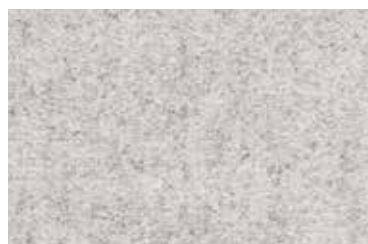
newcastle **cuz1w**



edinburgh **cuz1y**



aston **cuz02**



dartmouth **cuz2q**



stanford **cuz2r**



barnard **cuz2s**



holyoke **cuz2t**



vassar **cuz2u**



eynesbury **cuz2w**

blazer

supplier. **camira** origin. **england** type. **fabric**
fire-reterdant / environmental

class D



penola **cuz2x**



tyndale **cuz2y**



woodcroft **cuz2z**



montcrest **cuz3a**



abertay **cuz3b**



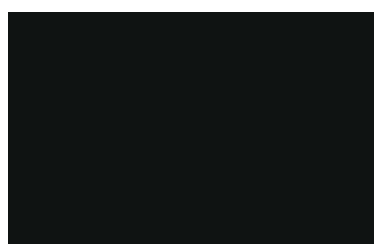
marymount **cuz3c**



barlborough **cuz3d**



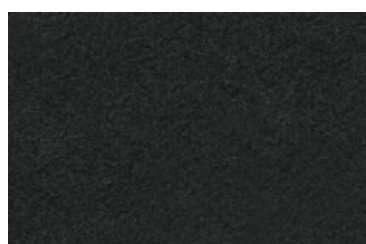
scottsdale **cuz3e**



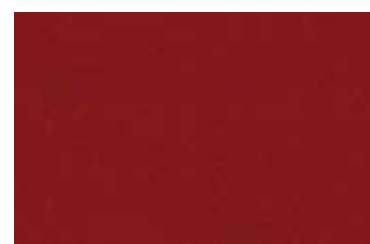
napier **cuz08**



oxford **cuz09**



winchester **cuz12**



wellington **cuz13**



oriel **cuz18**



magdalene **cuz21**



knightsbridge **cuz26**



silverdale **cuz28**



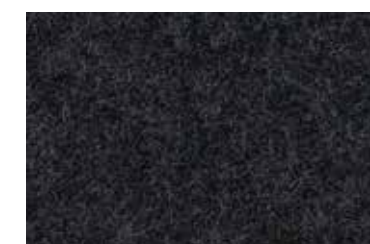
silcoates **cuz30**



trevelyan **cuz31**



latymer **cuz33**



bromsgrove **cuz35**

blazer

supplier. **camira** origin. **england** type. **fabric**
fire-reterdant / environmental

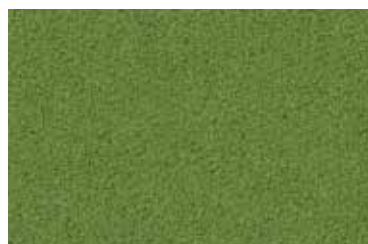
class D



goldsmith **cuz39**



fairfield **cuz47**



bryanston **cuz53**



dunhurst **cuz58**



glenalmond **cuz62**



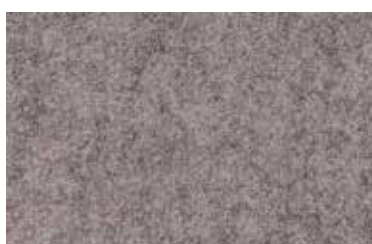
handcross **cuz63**



kingsmead **cuz67**



wesley **cuz82**



st andrews **cuz86**



edge hill **cuz90**

class D

blazer

PRODUCT SPECIFICATIONS / ÜRÜN ÖZELLİKLERİ			
Technical Informations	Unit	Value	Test Method
Weight	gr. / m ²	460g / m ² ±5% (645g / lin.m ±5%)	
Width	mm	140	
Abrasion Resistance	10 year guarantee / 50.000 martindale cycles		
Flammability			BS EN 1021 - 1:2014 BS EN 1021 - 2:2014 BS 7176:2007 low hazard
Light Fastness		5	ISO 105 - B02:2014
Fastness to Rubbing		wet: 4 dry: 4	ISO 105 - X12:2002
Environmental	rapidly renewable and compostable		
Composition	100% virgin wool		

Cleaning

Vacuum regularly. Professionally dry clean or wipe clean with a damp cloth.

Please note that seam performance is dependent on seam construction and needle and thread type. We recommend that appropriate sewing advice be taken.

Note

Batch to batch variations in shade may occur within commercial tolerances. We reserve the right to alter technical specifications without notice. The Unregistered Design Rights and the Copyright in all designs are the exclusive property of Camira Fabrics Limited.

ocean

supplier. **deri italya** origin. **italy** type. **real leather**
fire-reterdant / anti-microbial / uv resistance

class HD1
(real leather)



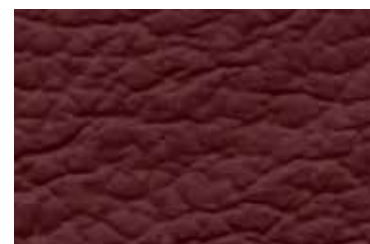
antilop **438**



betula **433**



bianco **401**



bordo **431**



cream **406**



fortuna **436**



forzen **403**



fumo **408**



ghia **404**



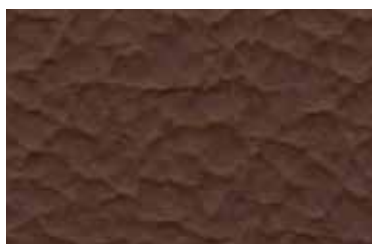
gray **405**



gray shadow **440**



nero **423**



nougat **441**



peniciline **435**



red **417**



swamp **439**



t. moro **420**



tan **437**



zinc **434**

class HD1
(real leather)

ocean

PRODUCT SPECIFICATIONS / ÜRÜN ÖZELLİKLERİ				
Technical Informations Test Tipi	Unit Birim		Value Limit	Test Method Norm
Tear Strength	n	>=20		UNI EN ISO 3377-1
Colour Fastness to Rubbing Dry	grey scale	>=4	500 cycles	UNI EN ISO 11640:1998
Colour Fastness to Rubbing Wet	grey scale	>=4	250 cycles	UNI EN ISO 11640:1998
Colour Fastness to Rubbing Sweat	grey scale	>=4	80 cycles	UNI EN ISO 11640:1998 ISO 11641 pH8
Flexing Endurance / Dry		no damage	50.000 cycles	UNI EN ISO 5402
Dinisch Adhesion / Dry	n/cm	>=2		UNI EN ISO 11644
Colour Fastness to Artificial Light Exposition Energy	blue scale	>=5	16.000 kj / sqm.	UNI EN ISO 105 B02 (MET. 5)
Burning Behaviour to Cigarette and Match Fame			pass	BS 5852:1979

Cleaning

Vacuuming and dry cleaning

Stain removal

See special guide

Benefits of wool

Wool is a renewable resource

Wool is very comfortable because of its ability to absorb/give off humidity

Wool is flame retardant

Wool is biodegradable

Wool is naturally soil resistant

Wool ages with grace

Quality benefits

Very good abrasion

Good lightfastness

Flame retardant

Environmental benefits

Complies with EU Ecolabel

No use of AZO dyes, which may split off carcinogenic acrylamines

No use of dyes containing heavy metals/ complies with ETAD norm

No content of formaldehyde

Biodegradable spinning oil

We adhere to the limits set by the Danish Environmental Protection Agency's 'List of undesirable substances' Complies with REACH

Reduced Emissions

Greenguard and Greenguard Gold certified